

Project Name: B6270 Reeth Landslide

Client: North Yorkshire County Council

Value: £65,000

Date: 5th Aug 2019 – 14th Aug 2019

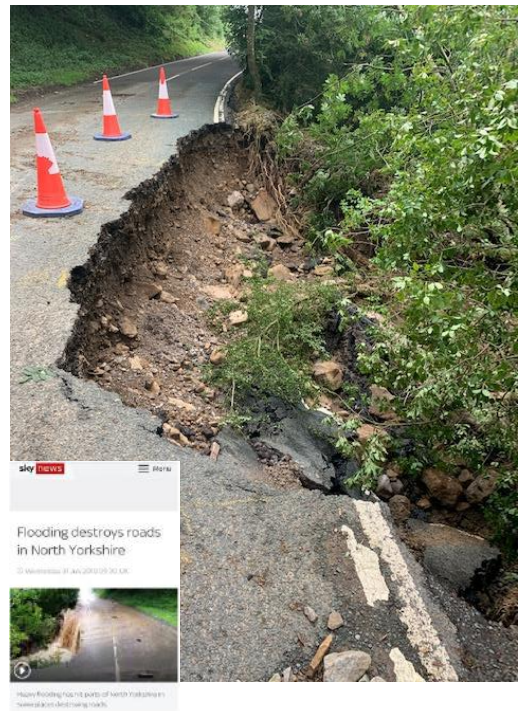
on Tuesday 30th July 2019, the town of Grinton (North Yorkshire) and surrounding areas suffered severe flooding due to unprecedented rainfall known as a 1:1000-year event. Such was the force of the water that it caused a section of the B6270 road to collapse. The event received coverage from national tabloids as well as the BBC and Sky News.

The collapsed road was the main arterial route between Reeth, Grinton and Richmond. The diversion route alone took over 1.5hrs to navigate and the roads were unsuitable for larger vehicles.

The closure of the road due to the collapse had a major impact on local business who rely on this main access route. This coupled with restricted access for emergency services meant that the collapse was declared a national emergency.

The event occurred on Tuesday the 30th July 2019 the damage was assessed by NYCC engineers on Wednesday 31st July 2019 and on Friday 2nd August 2019 Hinko were appointed under emergency powers to address the problem.

Hinko mobilised to site on Monday the 5th Aug 2019 and commenced with the remediation.



Rebuilding the Carriageway



The first operation was to remove the remaining B6270 carriageway to enable a safe procedure to build up a permanent retaining wall. Hinko acted quickly, utilising its local supply chain to ensure that the procurement of materials did not delay the works.

Hinko utilised large pre-cast concrete 'Lego blocks' to create a permanent wall adjacent to the embankment. As the blocks were built up in height the road was back filled and compacted in layers using locally sourced stone. To ensure further stability layers of geogrid were incorporated into the build-up.



Once to level the road was capped off to formation level using Type 1 stone before the carriageway resurfacing operation was undertaken utilising Hinko's in house surfacing team.



Upon completion of the surfacing works the road was re-opened.

The works were completed 10 within 10 days of the original collapse, minimising disruption to the local public and more importantly giving faster access to the emergency services.

It was an incredible effort by all involved to execute these works in such a short timescale and highlighted the importance of local supply chain.